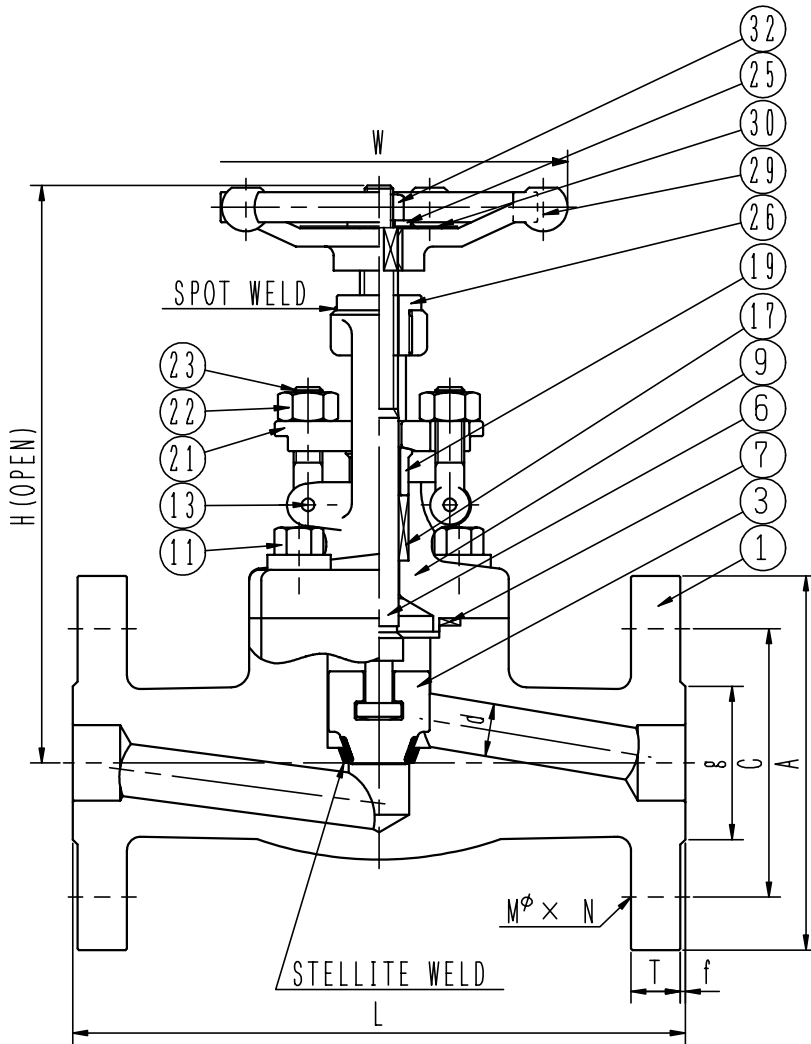


BODY MARKING
S I Z E
300



DRAWING NO.	0424EJ520-1A
FIG NO.	0424EJ



32	NUT	S20C	1	
30	NAME PLATE	ALUMINUM P.	1	
29	HANDWHEEL	FCMB270	1	
26	SLEEVE	SUS403	1	NITRID-ING
25	WASHER	S20C	1	
23	EYE BOLT	SUS410	2	
22	EYE BOLT NUT	S45C	2	Zn PLATED
21	GLAND FLANGE	ASTM A105	1	
19	GLAND	SUS403	1	NITRID-ING
17	GLAND PACKING	P#6610+6527(2R)	1Set	
13	EYE BOLT PIN	SUS304	2	
11	BONNET BOLT	ASTM A193 B7	4	
9	BONNET	SFVC2A	1	
7	GASKET	P#2600E	1	
6	STEM	SUS410	1	
3	DISC	SUS420J2	1	STELLITE WELD
1	BODY	SFVC2A	1	STELLITE WELD
NO.	NAME OF PARTS	JIS MATERIAL	PIE -CE	REMA -RK

DIMENSIONS

mm

SIZE	(A)	15A	20A	25A	40A	50A
(B)	1/2B	3/4B	1B	1 1/2B	2B	
d	10	13	17.5	31	37	
L	152	178	203	229	267	
A	95	115	125	155	165	
C	66.7	82.6	88.9	114.3	127	
g	34.9	42.9	50.8	73.0	92.1	
T	12.7	14.3	15.9	19.1	20.7	
f	2.0	2.0	2.0	2.0	2.0	
Mφ x N	16 x 4	19 x 4	19 x 4	22 x 4	19 x 8	
W	100	100	125	160	180	
H	167	167	204	250	296	
WEIGHT (kg)	4.6	5.2	8.0	14.0	18.5	

TITLE			
JPI800 FORGED STEEL B.B. OS & Y GLOBE VALVE FLANGED END JPI 300(RF)			
WATER BODY T.P.	7.7 MPaG	WATER SEAT T.P.	5.63 MPaG
REMARK			
K.OTSUKA	K.OTSUKA	T.ANDOU	2012.10
APPD	CHKD	DRAWN	DATE



SHORITSU SEISAKUSHO CO., LTD.